



White Paper

What's New in BarTender 9.2

Revision Control, new Print Utilities, new Commander Features, and more!



Overview of BarTender 9.2	4
New Companion Applications	4
Recently Introduced Companion Applications.....	4
Companion Applications Introduced with BarTender 9.2	4
New Color Icons for All Applications.....	5
Scanners and Camera Support	5
Easier and More Powerful Handling of Images.....	5
Commander Improvements.....	5
New Advanced Printing Features.....	5
Security Center User Interface Enhancements.....	5
Expanded Keypad Support.....	6
Microsoft-certified Compatibility with Windows 7.....	6
“Librarian” Provides Secure Label Format Storage and Revision.....	6
More Information Available about Librarian.....	6
Understanding Traditional File Management	6
Loose, Scattered Files.....	6
No Rules.....	6
How Librarian Streamlines Document Management.....	7
Secure Data Storage	7
Easy Migration of Files from the Windows File System.....	7
Automatic and Manual “Check In” and “Check Out” Functionality.....	8
File Revision History.....	8
Rollback to Older Versions	9
Workflow States	9
Workflow Transitions	9
Revision Control for any Document Format	9
“Print Station” Launches Print Jobs with a Single Mouse Click.....	10
Understanding Previous Printing Options.....	10
Easy, Single-Click Label Printing	11
Based on Powerful, Highly-Proven Technology	12
Batch Maker Lets You Combine Multiple Print Jobs into One.....	12
Why Print in a “Batch?”	12
Easier Batch Creation with Batch Maker.....	12
Multiple Methods of Batch Execution	13
Optional Overrides Customize Execution of your Batches.....	13

New Color Icons for All Applications in the BarTender Suite.....	14
BarTender now Supports Scanners and Cameras	16
A Convenient Alternative to Importing External Graphics Files.....	16
Great for Creating Design Templates of Legacy Labels	17
Easier and More Powerful Handling of Images	18
New Image Processing Dialog.....	18
Quicker Importing of Images	18
Smarter Default Size.....	19
Embed Linked Images Easily	19
Exclude Non-Printing Objects when Exporting Labels.....	19
Commander Can Now Return a Status Response	20
Format of the Status Response.....	20
Through a TCP/IP Port	20
In a File.....	21
User-Interface Improvements in Commander	21
Greater Control over the Display of Tasks	21
The Logging Pane.....	21
More Flexible Viewing of Command Lists.....	21
New Advanced Printing Features in BarTender	22
Dot Size Control for Improved Bar Code Quality	22
Increased Label Length	23
Label Corner Radius.....	23
Security Center User Interface Enhancements	23
Effective Permissions.....	23
Context Menu.....	24
BarTender Expands Keypad Support.....	24
Microsoft-certified Compatibility with Windows 7	24
Formal Microsoft Certification Now Received!	25
Compatible with 10 Years Worth of Windows Versions.....	25
More Details about our Testing.....	25
Windows 7 Compatibility for Windows Printer Drivers.....	25

Overview of BarTender 9.2

BarTender version 9.2 introduces three new companion applications, support for scanners and cameras, new integration features and more. This section briefly summarizes the new features, with the details found in the sections that follow.

New Companion Applications

BarTender 9.2 continues an important trend that began with version 9.0 and continued with 9.1. That is the introduction of “companion” applications that broadly expand the power of what we now refer to as the BarTender “Label Management Suite.”

Recently Introduced Companion Applications

Companion applications introduced with BarTender version 9.0:



Printer Maestro: Provides powerful enterprise print management not otherwise available with Windows.



History Explorer: Lets you audit past print jobs and system events.



Reprint Console: Lets you reprint all or part of past print jobs.

Introduced with BarTender version 9.1:



Security Center: A powerful security system that manages the permissions available to users and groups.

(For more details on BarTender 9.0 and 9.1 please see the [*dedicated white papers*](#) on the Seagull Scientific web site.)

Companion Applications Introduced with BarTender 9.2

And now, BarTender version 9.2 introduces three new companion applications that make the BarTender Label Management Suite even more powerful and easier to use than before:



Librarian: Lets large groups of users, designers and administrators cooperatively and securely manage the storage and revision of label formats and other documents.



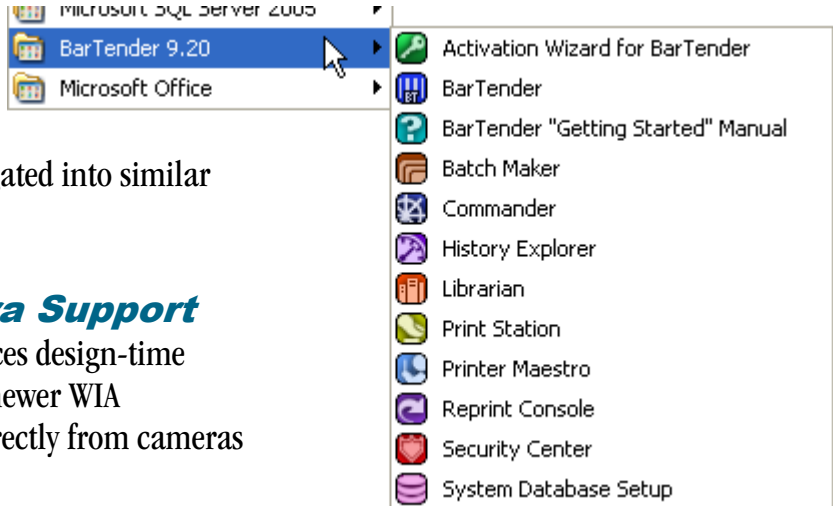
Print Station: Gives non-technical users easy, stand-alone “point-and-click” label printing without their ever having to see the inside of a label design program.



Batch Maker: Lets you quickly and easily combine multiple label jobs into a single “batch.”

New Color Icons for All Applications

BarTender 9.2 introduces 14 brand new color application icons, three of which were propagated into similar “document versions.”



Scanners and Camera Support

Version 9.2 of BarTender introduces design-time support for both TWAIN and the newer WIA standard for acquiring images directly from cameras and scanners.

Easier and More Powerful Handling of Images

A number of new features simplify the importing of graphics and their manipulation after import. This includes a new Image Processing dialog that allows BarTender graphics to be altered in many ways that previously would have required use of a separate program such as Photoshop.

Commander Improvements

Programs that control BarTender using the Commander middleware application can now optionally receive back important status information. In addition, Commander’s Task List and Logging Panes now have added power and flexibility.

New Advanced Printing Features

When using non-Seagull printer drivers, you can now specify optional dot-size information about the printer from within BarTender, instead of having to edit the BTWPRN.INI file.

You can now design and print labels up to 128 inches (3.25 meters) in length and/or width.

BarTender’s Page Setup dialog now allows you to alter the corner radius displayed for a label.

Security Center User Interface Enhancements

The new **Effective Permissions** feature combines an individual’s user-based security settings with the security settings from any group(s) that he or she happens to be a member of.

Expanded Keypad Support

BarTender 9.2 now supports the Argox ArgoKee keypad.

Microsoft-certified Compatibility with Windows 7

BarTender 9.2 is the first version of BarTender formally tested and approved by Seagull Scientific for compatibility with Windows 7. In addition, on November 6th, 2009, we formally received our Microsoft certification, including the rights to display this logo.



“Librarian” Provides Secure Label Format Storage and Revision

The new BarTender Librarian application lets large groups of designers, administrators and other users cooperatively and securely manage the storage and revision of label formats and other files. By raising your organization’s document management standards, you can more easily prepare yourself for audits that sometimes occur in agricultural, pharmaceutical, military and other highly-regulated environments. (Requires Enterprise Print Server edition.)

More Information Available about Librarian

The rest of this chapter of the “What’s New in BarTender 9.2” white paper includes a general overview of Librarian. For more detailed and more technical information, see the [*dedicated Librarian white paper*](#). In addition, there is also a detailed, context-sensitive help-system within Librarian.

Understanding Traditional File Management

The benefits of Librarian are easiest to understand if you first consider the more traditional methods of file management.

Loose, Scattered Files

Individual users commonly keep the files they are creating and editing locally on the hard drives of their own individual PCs. This allows individuals to manage their documents without regard for corporate and/or departmental standards. A somewhat better approach is for a group of users to edit the files they are working on in one or more shared folders on a network file server. Although there is still nothing to prevent users from altering files without following proper procedures, they may be influenced by the increased visibility their work has to coworkers and managers.

No Rules

Even if the group of users agrees to maintain files in (for example) sub-folders with names like “Draft” and “Published,” adherence to this structure is strictly voluntary, rather than a set of enforceable “rules.” Consider, for example, a shared folder named “Label Formats in

Use” that is supposed to contain only formally inspected and fully approved label designs. Despite this supposed “rule,” nothing prevents users with access to that folder from making changes outside of the formal approval process.

How Librarian Streamlines Document Management

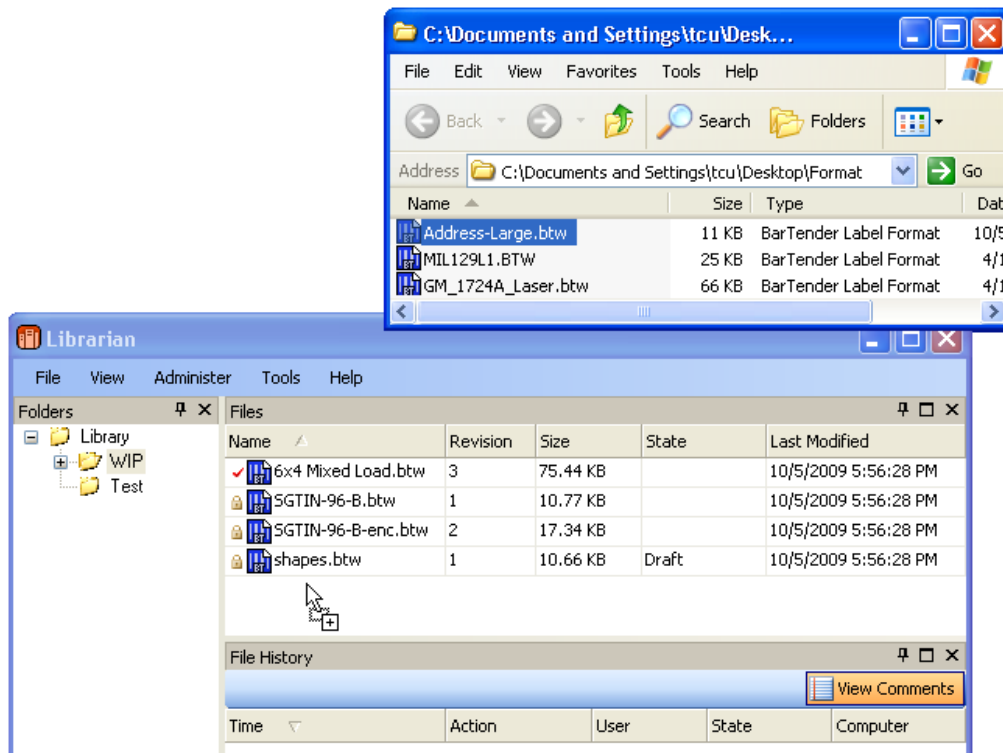
The BarTender Librarian application, available in the Enterprise Print Server edition of BarTender, provides a system for defining and enforcing document management rules in combination with a SQL-based alternative to the commonly-used Windows file system.

Secure Data Storage

Central to Librarian is its storage of BarTender label formats and other files in Librarian’s “Library,” instead of “loose” on your hard drive. This library is actually a designated storage area in the BarTender System database. Because this means use of a SQL or SQL Express database (depending on what you have set up), it is easy to set security rights to ensure that only authorized users have access to the database. In addition, BarTender Security Center can control which users can run Librarian and what permissions they will have inside the program.

Easy Migration of Files from the Windows File System

Any user with sufficient user rights to Librarian and the BarTender System Database can simply “drag and drop” files from a Windows folder into a specific folder in Librarian’s **Folders** pane or anywhere in the adjoining **Files** pane.



Authorized users can add files to the Librarian database using familiar “drag and drop” motions.

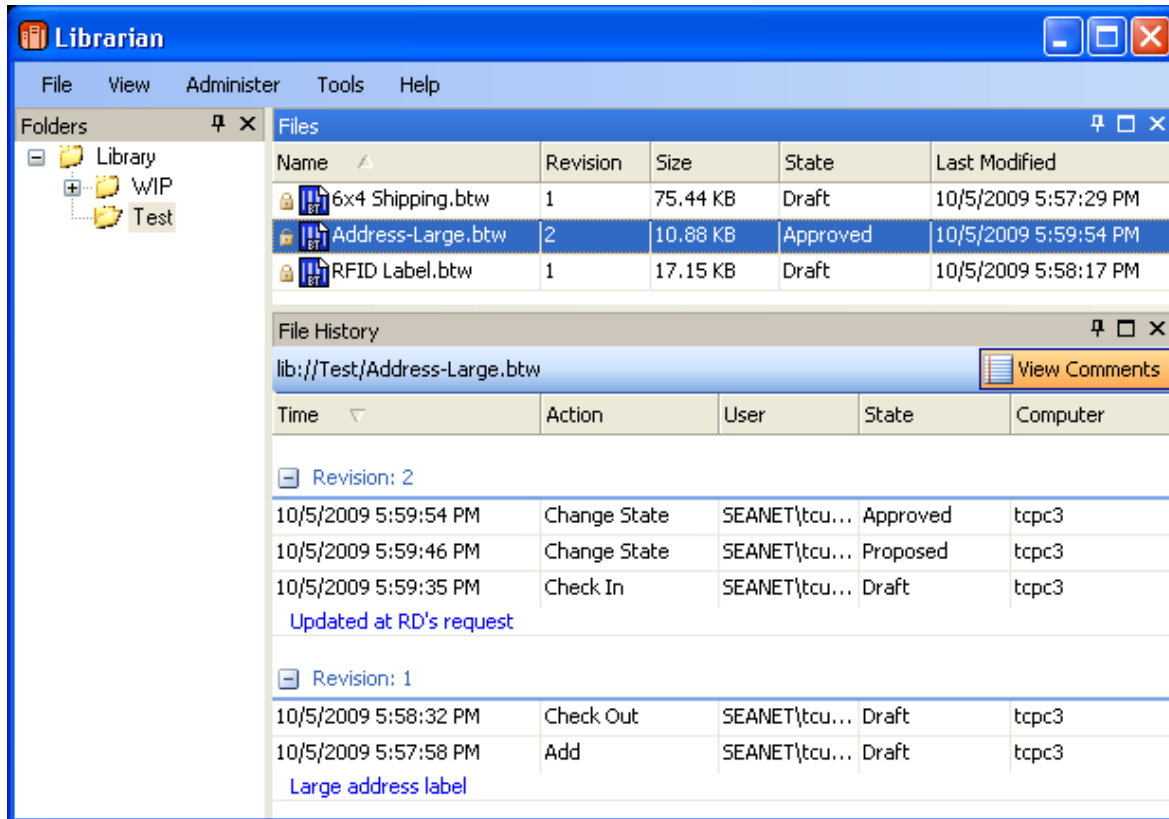
Automatic and Manual “Check In” and “Check Out” Functionality

If you open a label format from within BarTender that is stored in Librarian, a dialog in BarTender automatically pop-ups and offers you the opportunity to “Check Out” the label format. If you say “Yes,” then other users will be prevented from editing the label format until such time as you check the label format back into Librarian. (Other users will be able to load and print the label format – they just won’t be able to edit it.)

At this time, checking out files other than BarTender label formats from Librarian is a *manual* operation that can only be initiated from *within* Librarian. However, you can automatically check files back in just by dragging them into Librarian once you are done making your changes.

File Revision History

When you first copy a file into Librarian, it gets stored with a timestamp, optional comments, and the name of the user adding the file. When BarTender makes changes to a file, the revised copy gets stored in the Library with another timestamp, the name of the user, and any more optional comments that are specified. In addition, if you decide to manage your documents using Librarian’s optional workflow states, the state of the document also gets saved with each revision. At any time, you can view the **File History** pane to see the revision history of your documents stored in Librarian.



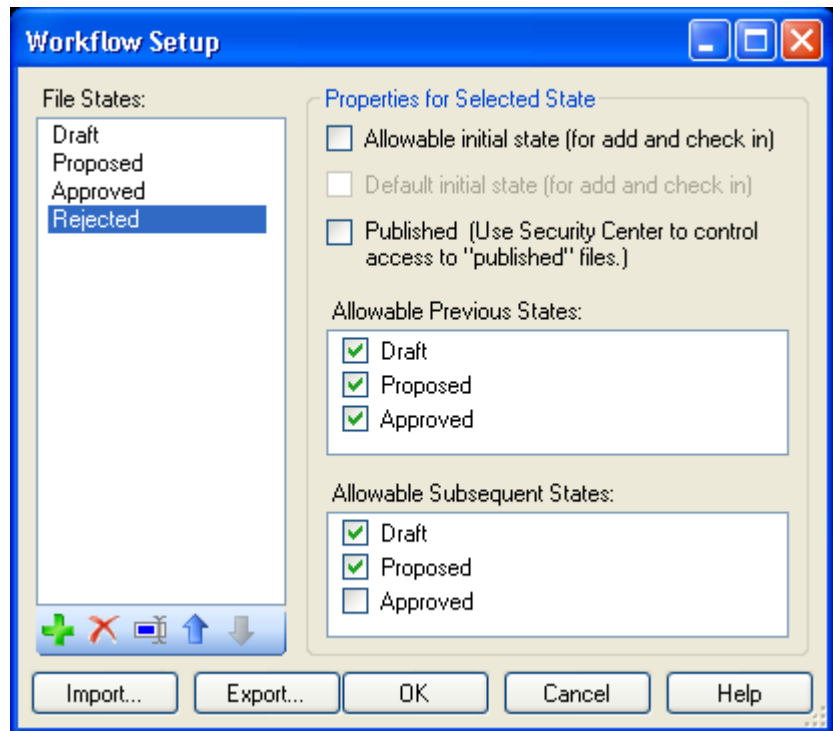
Librarian displays the full history of revisions to your stored files.

Rollback to Older Versions

Because Librarian retains past versions of your documents (until such time as you delete them), you retain more than just data regarding who revised your files and when. You actually retain full copies of the past versions of those files. That means that, if some changes to a document for any reason prove to be unacceptable, you can actually “Rollback” to a previous version.

Workflow States

Librarian lets you optionally define your own custom states for assigning to your different file revisions. This can be as simple as two states, such as "Proposed" and "Approved," and as increasingly complicated as you like. As an alternative to building your own fully custom system of file states from scratch using the **Workflow Setup** dialog, you can import a sample system of files states using Librarian's Import function. Click the **Import...** button at the bottom of the **Workflow Setup** dialog and open the “Sample Workflow.xml” file found in the displayed folder.



Workflow Transitions

As long as a workgroup of colleagues strictly adheres to agreed-upon rules for how a defined system of states is used, the use of states alone represents an easy way to improve document management. Unfortunately, such a voluntary system is highly vulnerable to the habits and attention to detail of the people using it. Librarian lets you gain better control over the management of your files by defining rules for Workflow transitions. This is a major step toward the implementation of a powerful workflow management and file publishing system. You will not only be able to better organize your files, but you will also maintain more orderly control over the revision and publishing process.

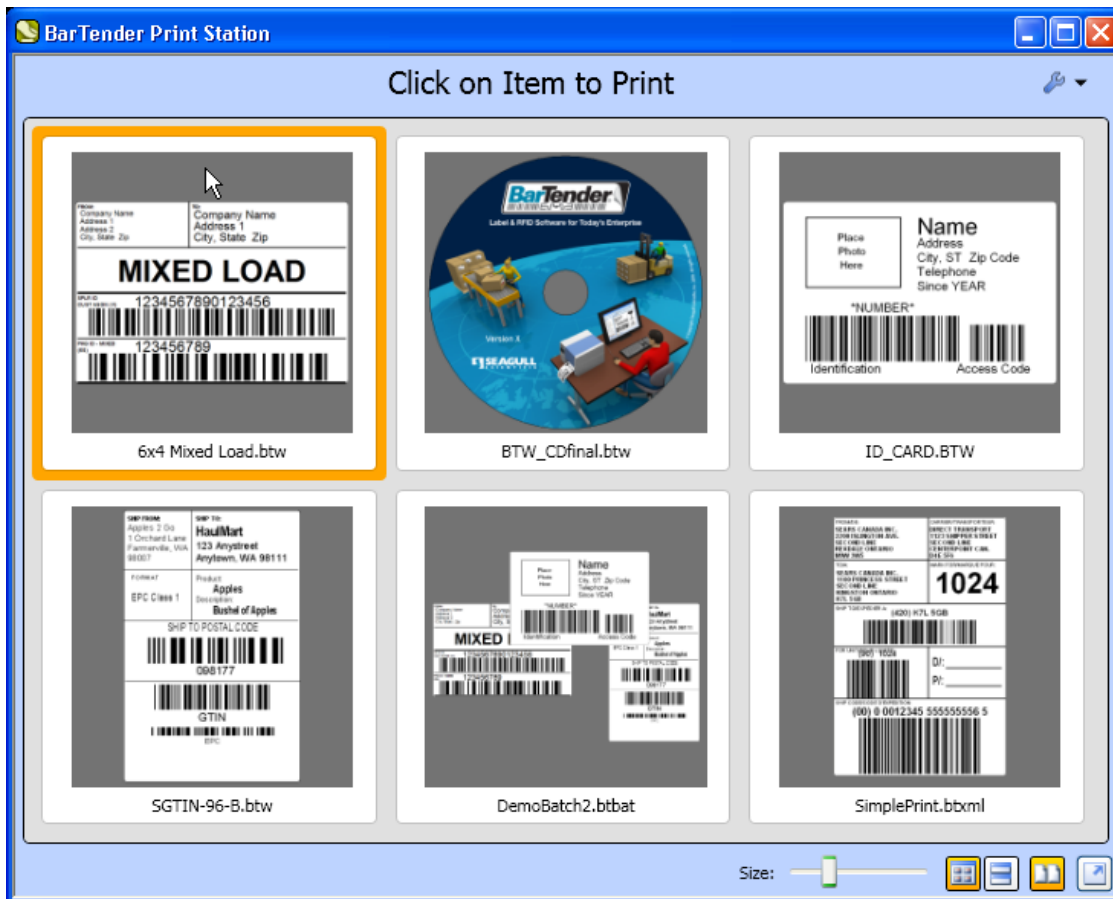
Revision Control for any Document Format

At this time, only BarTender can directly read and automatically check out files from Librarian. In the future, additional applications within the BarTender label management suite will also gain this capability. In addition, you can copy files from applications that are *not* part of the BarTender Label Management Suite into Librarian and assign them comments, timestamps, and

take advantage of Librarian's workflow features. However, in order to actually revise one of these files, you have to manually check it out of Librarian and edit it with its associated application. Thereafter, you would have to drag the file back into Librarian to check it back in. (In other words, applications outside of the BarTender Label Management Suite cannot directly open files while they are stored within Librarian's repository.)

"Print Station" Launches Print Jobs with a Single Mouse Click

The new Print Station application, provided with *all* editions of BarTender, is a stand-alone application that turns the selection and printing of label jobs into a simple point-and-click operation.



Understanding Previous Printing Options

Prior to the release of Print Station, there were two basic methods of printing BarTender Label Formats:

- **Directly using BarTender:** Since its introduction in 1993, BarTender has become famous around the world for its user-friendly interface. The fact remains, however, that it now offers a variety of very advanced label design features. Therefore, some consultants, resellers and managers explicitly isolate their users from the design interface by using BarTender passwords and/or BarTender Security Center.
- **Controlling BarTender from within other Software:** Another way to print is to control BarTender from within another program. This is usually done use ActiveX Automation or Commander integration. However, this almost always involves some sort of software development or custom configuration effort within the controlling environment.

Easy, Single-Click Label Printing

A variety of users and resellers will be excited to use Seagull's first program dedicated 100% to the extremely quick and user-friendly selection and printing of BarTender label formats.

Features and benefits include:

- **Preview Numerous Label Formats On-Screen:** Because Print Station isn't built around a label design area (as is BarTender), Print Station is able to dedicate most of your computer screen to displaying thumbnail preview images of multiple label formats. (BarTender's File, Open window can also show label previews. However, this window is limited in size and therefore shows fewer and/or smaller preview images.)
- **Optional Comments:** In addition to the name of each label format, administrators can configure Print Station to display an optional comment for each one.
- **Quick Single or Double-Click Printing:** Administrators can specify that Print Station immediately initiate label jobs as soon as the preview image is clicked on. Alternatively, administrators can specify a double-click mode, which offers users the ability to adjust certain options prior to the second click.
- **Supports Multiple Print Job Types:** Print Station can preview and print BarTender label formats, BarTender batch files (created by Batch Maker -- see next section), or even BarTender XML Script files.
- **Secure:** Administrators using any of the Enterprise editions of BarTender can use BarTender Security Center to lock down and prevent unauthorized access and administration of Print Station.
- **Great for Dedicated, Stand-Alone Use:** Print Station can be locked into a "full screen" mode that turns it into a stand-alone workstation dedicated 100% to the quick and easy selection and printing of labels.
- **Support for On-Screen Data Prompts:** If any of BarTender's optional on-screen print-time prompts and query prompts have been specified in a label format, they will pop-up and request data at the beginning of a Print Station print job.

Based on Powerful, Highly-Proven Technology

At first glance, Print Station seems like a third, brand new way to print (in addition to direct use of BarTender and control from within other software). However, it is somewhat more accurate to think of Print Station as a *combination* of the two primary methods. That is because Print Station is in fact a “front end” that controls BarTender’s fast, powerful, and heavily field-tested print engine using ActiveX Automation. However, because Print Station uses BarTender silently “in the background,” users don’t even realize that it is there.

Batch Maker Lets You Combine Multiple Print Jobs into One


Batch Maker is a new utility that simplifies the task of joining multiple label jobs into a single, easily repeatable “Batch.” (Batch Maker is available for use with all BarTender editions except for “Basic.”)

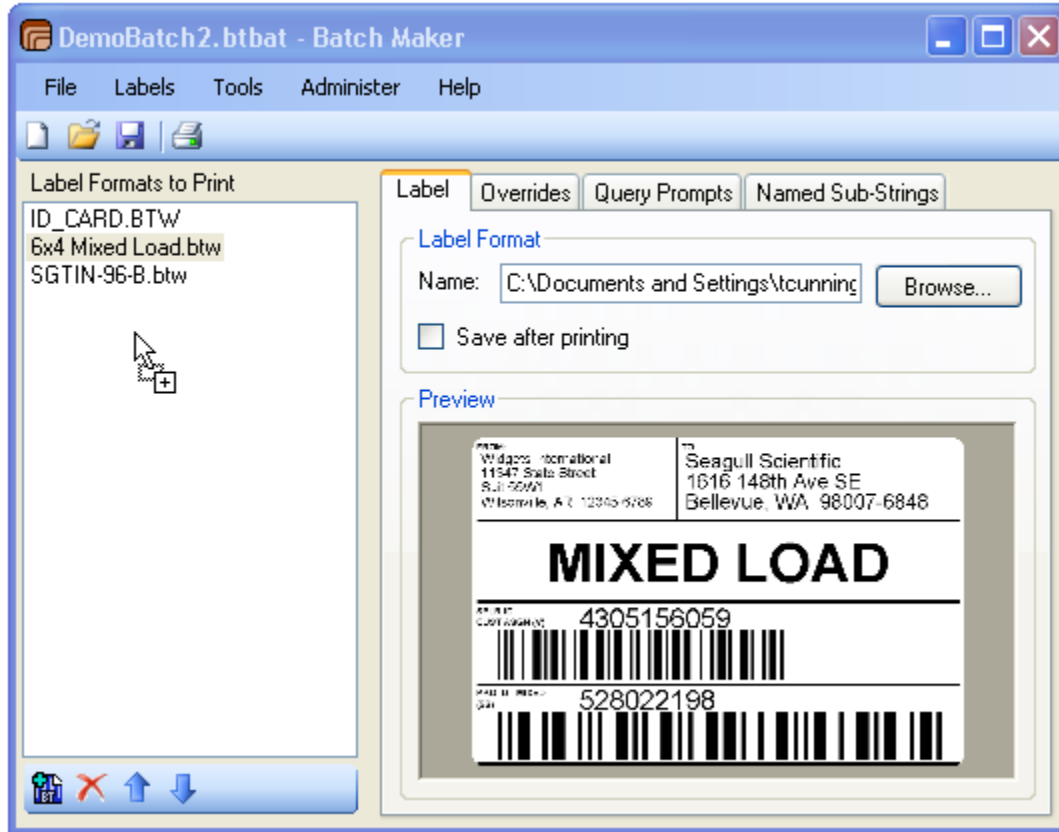
Why Print in a “Batch?”

Sometimes it is desirable to select and print multiple label formats at once. For example, at the end of a final manufacturing step, you might want to output both a product label and a shipping label that was based on a totally different format. To accomplish this prior to BarTender 9.1, you could manually select and print each job from within BarTender, or you could set up a controlling program to launch each of the two print jobs in response to a single event (such as the pushing of a physical or on-screen button).

Easier Batch Creation with Batch Maker

Batch Maker gives you two very easy ways to combine multiple label formats into Batches:


- **Drag and Drop from Windows:** From within any Windows Explorer window, simply “drag” any number of label formats that you want to add to your batch into the **Label Formats to Print** region of Batch Maker.
- **Add from within Batch Maker:** Alternatively, you can use the  (Add Label Format to Batch button) at the bottom left corner of Batch Maker to launch a standard Windows **File, Open** dialog and select documents one at a time.



Batch Maker lets you collect documents into batches using the simplest of drag and drop motions.

Once you have selected the documents for your batch, you use the standard Windows **File, Save** command to save your batch configuration to a file with an extension of “BTBAT.” And then your batch is ready for execution!

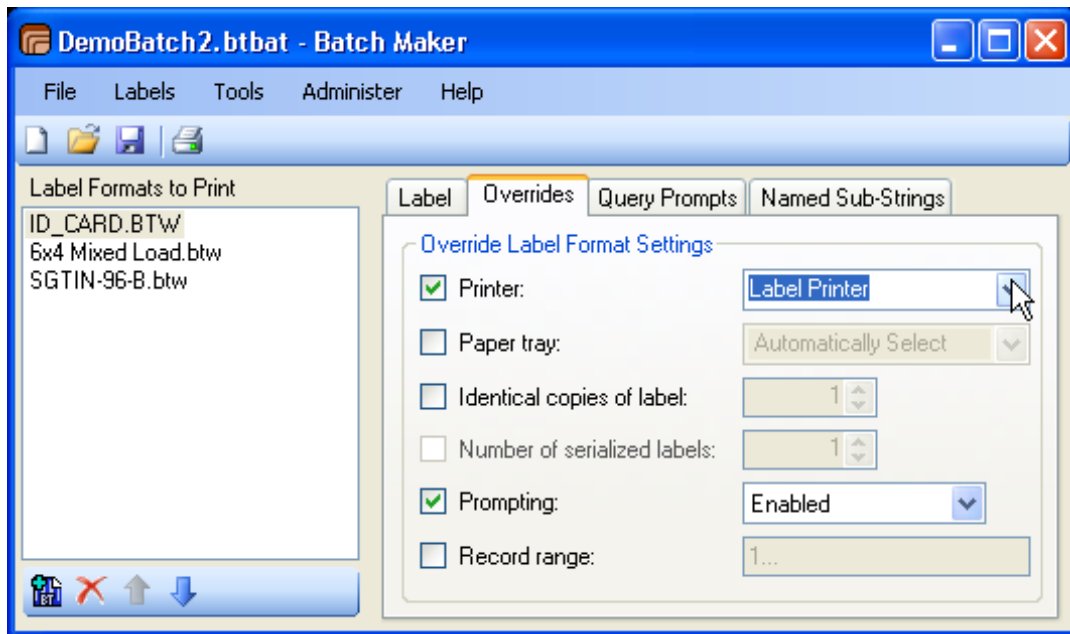
Multiple Methods of Batch Execution

- **From Batch Maker:** You can use the **File, Print Batch** option (same function as the  button) within Batch Maker itself to start execution of your batches.
- **From other Programs:** In addition, you can select and launch Batch Maker batches from within BarTender and Print Station.
- **From Windows Explorer:** You can even launch Batch Maker batches just by double-clicking on them from within Windows Explorer.

Optional Overrides Customize Execution of your Batches

By default, each document in your batch will print according to various parameters defined within each document, including which printers to use. Sometimes, however, you may want to override certain document settings once they have been incorporated into a batch. There are three tabs available for this:

- **Overrides:** Lets you optionally specify the printer and the number of identical and/or serialized copies to print of each label.
- **Query Prompts:** As an alternative to having a BarTender prompt form pop up and request entry of one or more data values, you can predefine static answer(s) to these prompt(s) in advance. This allows the batch to print without having to wait for keyboard input.
- **Named Sub-Strings:** Let's you provide static overrides for any named sub-strings in a label format.



You can override selected parameters for each individual document when printing Batch Maker batches.

New Color Icons for All Applications in the BarTender Suite

Starting with BarTender 9.0 and continuing through the current BarTender 9.2 release, eight new “companion applications” have been added to what we now call the BarTender Label Management Suite. The icons being used to represent the various applications have, until now, simply been a two-letter abbreviation for the application (such as BT for BarTender and HE for History Explorer). Unfortunately, as the number of applications grew, the icons became more difficult to tell apart at a quick glance and, frankly, they were kind of boring to look at.

Version 9.2 of the BarTender Label Management Suite introduces 14 brand-new color application icons. In addition, three of the application icons were propagated into similar “document versions” for the files saved by BarTender, Commander and Batch Maker.

Some colors were used for two icons simply because we felt that there were too many icons for each one to have its own individual shade. (This would have required, for example, colors such as dark blue, blue, light blue and so on and so forth.)



Activation Wizard for BarTender



BarTender "Getting Started" Manual



BarTender



Label Format



Batch Maker



Label Batch



Commander



Commander Task



History Explorer



Librarian



License Server



Print Station



Printer Driver Wizard



Printer Maestro



Reprint Console



Security Center



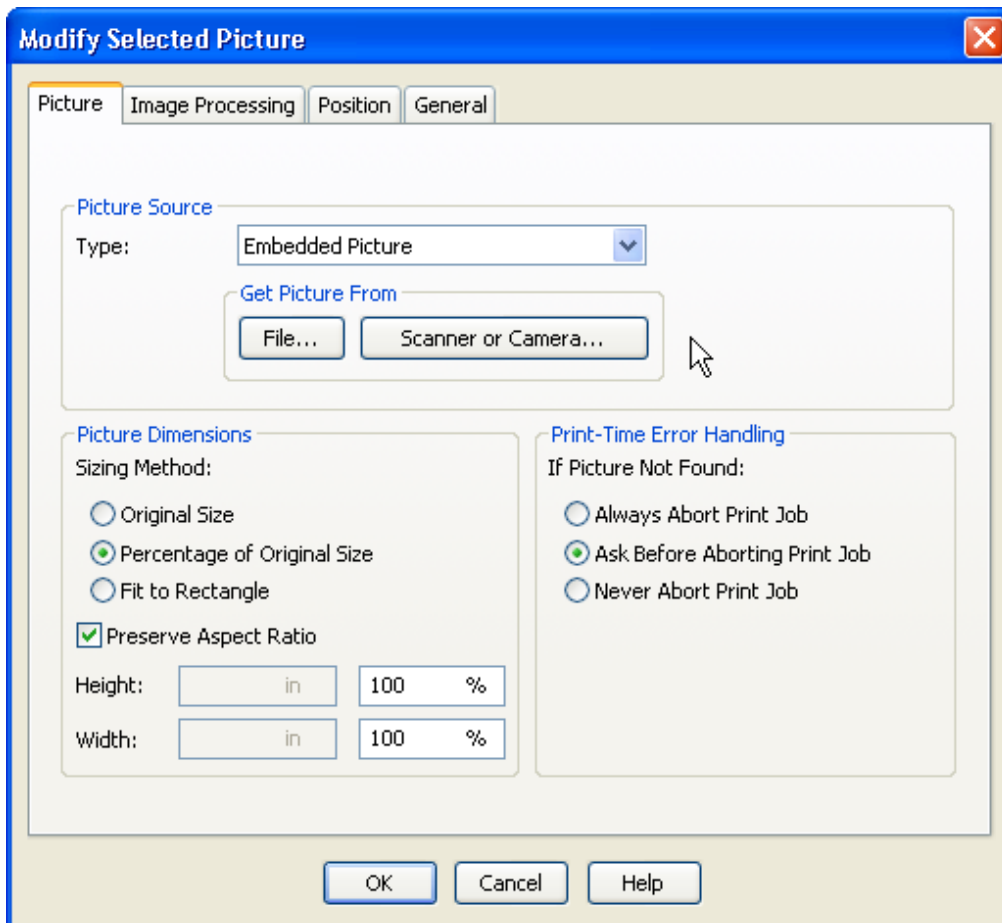
System Database Setup

BarTender now Supports Scanners and Cameras

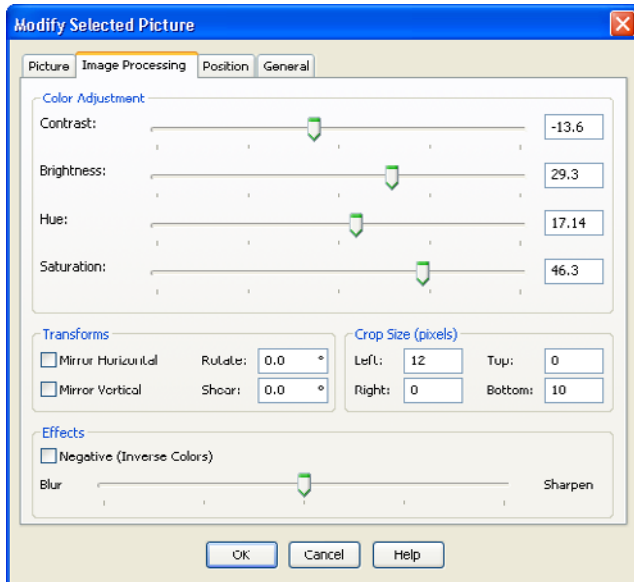
Version 9.2 of BarTender introduces support for both TWAIN and the newer WIA standard for acquiring images directly from cameras and scanners. This support is being introduced as a *design time* feature ideal for two general classes of use.

A Convenient Alternative to Importing External Graphics Files

BarTender has for many years been able to import external graphics for inclusion in your labels. This makes it easy to add images from existing files to your labels for printing, such as company logos and pictures of parts. However, until now, any scanning that you performed to create these images had to be done within a separate program, saved to a file, and then imported using BarTender into your label design. Now with, with BarTender 9.2, the ability to acquire an image from a scanner or camera is provided within the Modify Selected Picture dialog, as if the scanner were just another type of graphic source.



BarTender 9.2 makes it easy to import scanner and camera images into the label design area.



With BarTender 9.2, you gain access to many image processing functions that would otherwise require use of a separate program.

Great for Creating Design Templates of Legacy Labels

BarTender has for some time had the ability to define an image on a label as being on a “background” layer. Some resourceful users have leveraged this capability to create design templates when converting to BarTender from old legacy software packages.

The *old* process was:

1. Use a scanner and companion scanning program to acquire an image of your old label.
2. Load that image into a program such as Photoshop and significantly lighten the image to create what looks like a “ghost” image of your old label.
3. Select BarTender’s Page Setup, Background tab and specify the picture **Source** type.
4. Press the Select Picture... button to select the graphic that you modified in Photoshop as your background image. Press Ok to exit from the Page Setup dialog to begin designing your new label with the help of the background image as your design template.

Now, with BarTender 9.2, all of your steps for setting up a background image to use as a design template can be performed from within the Page Setup, Background tab of BarTender as follows:

1. Start out by selecting BarTender’s Page Setup, Background tab and specify the picture **Source** type.
2. Press the **Scanner or Camera...** button on BarTender’s **Page Setup, Background** tab and take your photograph or scan your image. (The image will appear on your label.)

3. Instead of modifying the graphic in a program such as Photoshop, just click on the new **Image Processing** tab (see next section) and increase the brightness to near 100%. At your option, you can also change the size, crop the image and adjust its rotation – all from within BarTender's **Image Processing** tab. (As before, press Ok to exit from the Page Setup dialog.)

Once the ghost image of your old legacy label is sitting as a background image on your label design area, you can now design your new label in BarTender using your old one as a general guide. (Once you are done designing, and before you print, you will either need to delete the background image or specify the **Do Not Print** option in the Background tab.)

Easier and More Powerful Handling of Images

As part of BarTender's big step into the world of direct image capture from cameras and scanners, Seagull has introduced a variety of additional processing functions to further simply the handling of *all* graphics (not just those from scanners and cameras).

New Image Processing Dialog

BarTender's new **Image Processing** dialog (accessible from within both the **Modify Selected Picture** dialog and the **Page Setup, Background** tab) has the ability to directly adjust the following attributes of an image:

- Brightness
- Contrast
- Saturation
- Hue
- Sharpness
- Smoothing
- Cropping
- And more.

BarTender cannot compete with the full graphics power of a program such as Photoshop, but for many of the basic image processing functions required for label printing, BarTender's new functions will be all you need.

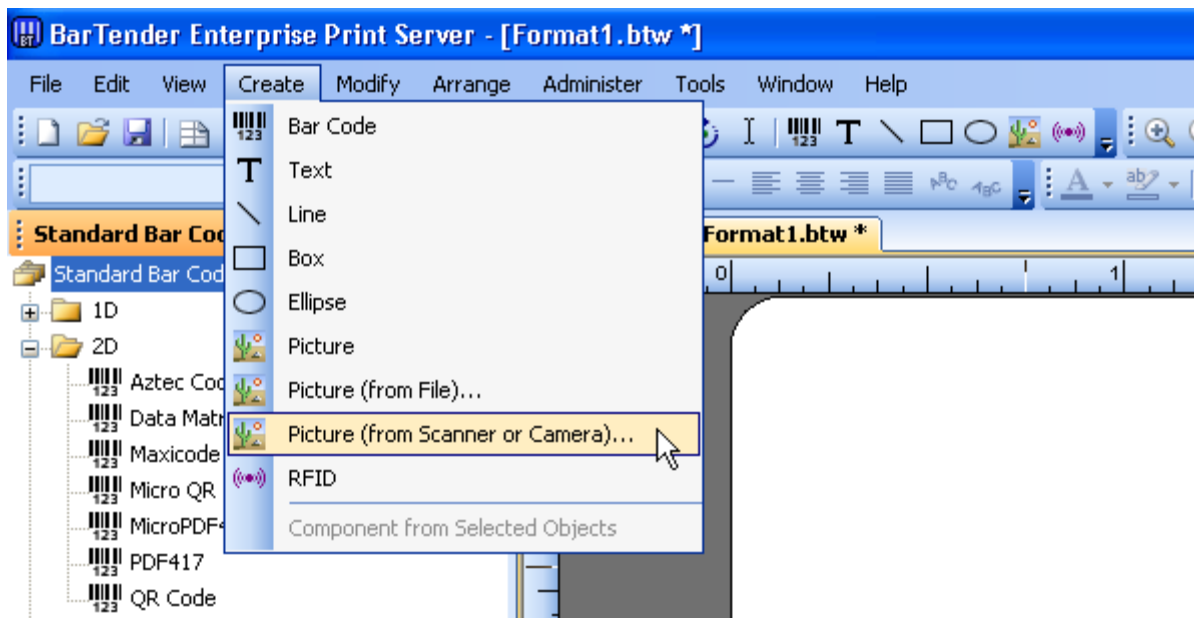
Quicker Importing of Images

With prior versions of BarTender, the **Create Picture** function was used to place a graphic placeholder on your label. You could then either double-click on the graphic to bring up the

Modify Selected Picture dialog and choose a graphic right away, or you could leave the placeholder image alone until later while you continued designing the rest of your label.

With BarTender 9.2, you retain all of the above flexibility, but you now have a new, faster way to import graphics. When you select the new **Create, Picture (from File)** option, you can immediately specify the graphic file that you want to import, without having to navigate through the **Modify Selected Picture** dialog. There is also a new **Create, Picture (from Scanner or Camera)** option.

It is also now possible to simply drag and drop a picture file from Windows Explorer directly onto the label design area.



Two new options allow for faster and more flexible creation of graphics.

Smarter Default Size

Newly imported images that are very large and/or high resolution now have their size automatically default to less than 100% if necessary to fit on the label. (Because the “Preserve Aspect Ratio” check box is enabled by default, the length and width will be resized proportionally.)

Embed Linked Images Easily

Switching images from Linked to Embedded now automatically embeds the already linked image, instead of reverting to the default placeholder graphic and requiring you to import the desired graphic again.

Exclude Non-Printing Objects when Exporting Labels

BarTender has long offered the **File, Export Image** dialog to support the export of individual label objects, multiple objects, and entire labels as graphic images suitable for import into other programs.

In past versions of BarTender, if you selected the **Entire Label Image** checkbox, BarTender would export *all* images on the label, including any for which you might have specified **Do Not Print Object** on the **General** tab of the **Modify Selected Object** dialog. That's fine if you meant to export your non-printing images, but if you had an object on a label that was intended to be a comment or a reference image that you would never have printed, you might also not want to export it with the rest of your label. Until now, the only way to accomplish this was to individually select only those objects that you wanted to export instead of using the **Entire Label Image** option.

Now, with BarTender 9.2, you can simply check the **Exclude non-printing objects** option on the **File, Export Image** dialog and only those objects that would normally print will be exported.

Commander Can Now Return a Status Response

Programs that control BarTender using the Commander middleware application can now receive back important status information, either by reading a TCP/IP port or a file.

Format of the Status Response

When Commander uses BarTender XML Script to control BarTender, status information can be returned from BarTender to Commander in the form of an XML Response. Once Commander has received this status information, it can transmit a response to the controlling application in one of four formats:

- The original response from BarTender, without modifications.
- The original response from BarTender, transformed by Commander using a user-specified XSL style sheet.
- The original trigger data from the controlling application.
- The original trigger data from the controlling application, transformed by Commander using a user-specified XSL style sheet.

The response can be returned to the controlling application (or sent to another application) in either of two ways:

Through a TCP/IP Port

A new command within Commander allows it to send data to a TCP/IP port in either of two ways:

- Commander can open its own TCP/IP connection to a specific port address.
- Alternatively, if the original trigger was received through a specific TCP/IP socket opened by the controlling application, the response can be sent back by Commander using that same socket.

In a File

The response information can also be placed by Commander in a file for reading by the controlling application.

User-Interface Improvements in Commander

Starting with version 9.2 of BarTender, Commander offers greater flexibility in the control and use of a number of established functions.

Greater Control over the Display of Tasks

- **More Flexible Task View:** Users can now sort by any of the columns in the Task List. They can also add, remove, and reorder columns. (Previously, to reorder a task list, you had to delete selected tasks and reenter them into the newly desired position. Furthermore, the columns could not be adjusted.) The context (“right-click”) menu for the Task List has been updated to support these new configuration functions.
- **New Command Handler Column:** Users can now optionally view the name of the “Command Handler” in the Task List. This makes it easy to see which tasks share a Command Handler.

The Logging Pane

- **Save/Clear Contents of Logging Pane:** You can now save the current contents of the Logging pane to a file. You can also clear the Logging pane when desired.
- **Hide Logging Pane:** You can now set the Logging Pane to Auto-hide, so that it only displays when the user hovers the cursor over it. Alternatively, if the information displayed in the Logging Pane is simply not needed for your application at all, you can close it altogether.

More Flexible Viewing of Command Lists

- **Easier Reordering of Command Lists:** Command Lists can now be reordered by right-clicking on them and using the new Move Up and Move Down functions. Even easier, you can reposition commands using standard Windows “drag-and-drop” motions. (As with Task Lists, prior to BarTender version 9.2, Command Lists could only be reordered by deleting commands and then reentering them in the new position.)
- **Move Commands Between Tasks:** There are now also Cut, Copy, and Paste functions that let you copy or transfer one or more commands from one Task to another.

New Advanced Printing Features in BarTender

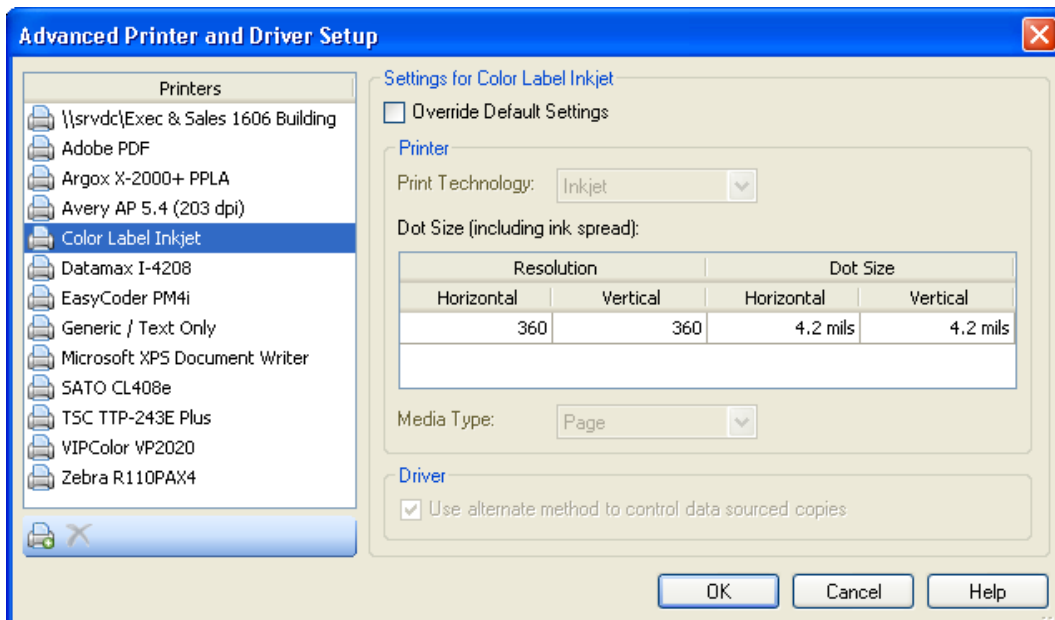
BarTender 9.2 provides a number of enhancements directly related to the quality of label printing and design.

Dot Size Control for Improved Bar Code Quality

When you use a Seagull printer driver to print, BarTender automatically knows not only the addressable resolution of the printer, but also the minimum printable dot-size. Both of these are important for BarTender to display the correct bar code density settings during label design and to provide the best possible quality when printing. Unfortunately, when printing through non-Seagull printer drivers, dot size information is not available – just a “resolution” setting, which is usually different from the dot size. BarTender can still print readable bar codes on these printers. However, for some, most notably certain ink-jet printers, some adjustments need to be made in order to ensure the best possible bar code quality – especially when printing high-density bar codes.

Until version 9.2, these adjustments were handled by manually adding a dot size value for the printer into the BTWPRN.INI file using a text editor such as Notepad. Now, with version 9.2, you get a nice, beautiful user-interface accessible from right inside BarTender. The new **Advanced Printer and Driver Setup** dialog in the Administer menu gives you a clean, simple way to specify the dot-size (including ink spread) when you are not using Seagull drivers. You can specify some other printer settings as well.

(The settings specified within the new **Advanced Printer and Driver Setup** dialog are saved within BarTender’s internal configuration information and *not* the BTWPRN.INI file.)



It's now easy to specify the printer dot-size and other advanced printer settings for printers not using Seagull printer drivers.

Increased Label Length

It is now possible to design labels up to 128 inches (3.25 meters) in length and/or width (if the printer and printer driver support it). (Prior to version 9.2, the maximum limit was 50 inches, again, subject to the limits of the printer and the driver.)

Label Corner Radius

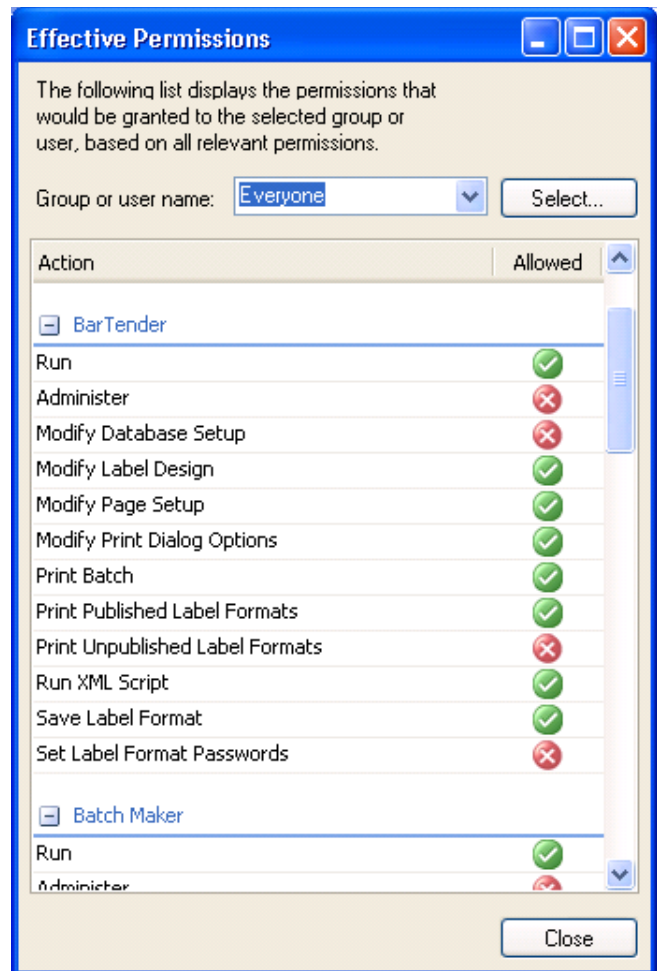
In BarTender's Page Setup dialog, when you have "Rounded Rectangle" specified as your label shape, you can now alter the corner radius displayed for a label. (Prior to version 9.2, the corner radius for Rounded Rectangle labels defaulted to 1/8 of an inch.)

Security Center User Interface Enhancements

BarTender Security Center was first added to Enterprise editions of the BarTender Label Management Suite when version 9.1 was released in April of 2009. This companion application adds user and group-level permissions management and logging functions that simplify compliance with pharmaceutical, military, and other highly regulated environments. With BarTender version 9.2, two minor user-interface enhancements have been added. (These are still only available with the Enterprise editions of BarTender.)



Effective Permissions

Users of the BarTender Label Management Suite are subject to more than just the permission settings explicitly associated with their user name in Security Center. In addition, they may also be a member of one or more "Groups." By organizing users into groups, Security Center allows for certain permissions to be set identically for many users at the same time. The complication is that sometimes an access right that is set one way in a user's individual security settings is contradicted by a security setting in one or more groups that they are a member of. This sometimes makes it difficult to determine what your true access rights are within the Label Management Suite.



The Effective Permissions view combines a user's individual security settings with the settings from any groups that they may be a member of.

The new Effective Permissions feature clarifies any ambiguity regarding a user's security rights by automatically combining his or her individual security settings with the security settings from any group that they happen to be a member of. To view the **Effective Permissions** dialog, you right click on the desired group within the **Users and Groups** pane of Security Center.

Remember that when a "Deny" setting is contradicted by an "Allow" setting elsewhere, the "Deny" setting always takes priority. In this regard, you can see that the **Effective Permissions** dialog only displays a single green "Allowed" symbol  or a red "not allowed" symbol  for each permission.

Context Menu

There are now context menus which allow the user to check, uncheck, or reset all settings for either all applications, or only a single application.

BarTender Expands Keypad Support

Enterprise editions of BarTender have for many years supported the export of Printer Code Templates ("PCTs") which can then be downloaded to a variety of external keypad devices. Using keypads, you cannot make basic changes to the layout of your label and you don't get the user-friendly print environment of BarTender or any of its supporting utilities. However, the keypads can print labels to a specific model of printer without being connected to your main network. (Usually, the keypad is used to supply just one or two fields of data to the rest of the label image defined by the downloaded PCT.)

The Enterprise editions of BarTender version 9.2 come with a new PCT that adds support for the export of Printer Code Templates to the Argox ArgoKee keypad device (Requires version 7.1.8 or higher of the Argox printer drivers).

Microsoft-certified Compatibility with Windows 7

BarTender version 9.2 first shipped on October 19th, 2009. In addition to the extensive battery of tests required to confidently release numerous new features and companion applications, the entire application suite was stress-tested for more than three months on Windows 7. The last month of this testing was performed using a pre-release copy of Windows 7 identical to what Microsoft began shipping on October 22nd (just three days after the release of BarTender 9.2.).

Formal Microsoft Certification Now Received!

Microsoft's formal certification and the associated approval to use their Windows 7 logo were received on November 6th, 2009.



Compatible with 10 Years Worth of Windows Versions

The BarTender 9.2 Suite maintains backward compatibility with all flavors of Windows 2000, XP and Vista, including both 32-bit and 64-bit editions, as well as Windows Server 2003 and 2008.

More Details about our Testing

As with previous releases of BarTender, testing of version 9.2 relied heavily on advanced in-house testing technology and procedures Seagull Scientific has developed and refined since we launched our first Windows product in 1993. In addition, a variety of Microsoft-specified tests had to be passed in order to receive Microsoft certification and their approval to use the Windows 7 logo.



Our team of Quality Assurance engineers extensively tested all components, including:

- The main BarTender program
- Seagull License Server
- Installer
- Activation Wizard
- Commander, Printer Maestro, Security Center, Librarian and the rest of the eight "Companion Applications."

A large battery of manually run and automated regression stress tests were performed, including:

- Design functionality
- Printing
- Performance
- Peak load handling
- Memory leakage
- Stability and consistency under regression
- Security access

Windows 7 Compatibility for Windows Printer Drivers

Although Seagull recently released Version 7.1.8 of our "Drivers by Seagull," this was just a general feature upgrade. Our printer drivers have been compatible with Windows 7 since version 7.1.2, which was released more than two years ago on the 27th of July, 2007.

Available Seagull White Papers

General White Papers

- The Advantage of Drivers by Seagull
- Choosing the Right BarTender Edition
- Label System Security

Companion Applications

- Printer Maestro, Part 1: Enterprise Print Management
- BarTender Security Center
- BarTender Web Print Server

Recent Upgrades

- What's New in the Latest BarTender

Integration White Papers

- Integration Overview
- Commander
- Commander Examples
- BarTender's .NET SDKs
- BarTender's ActiveX Automation Interface
- Exporting Printer Code Templates
- Using BarTender with Terminal Services and Citrix MetaFrame
- XML Integration with Oracle's WMS and MSCA

Integration With SAP

- SAP Integration Methods
- Reading SAP IDocs
- SAP Auto Infrastructure Integration with BarTender

Miscellaneous White Papers

- BarTender Enterprise Licensing
- Printing International Characters Using BarTender
- BarTender Software Activation
- Using BarTender's Application Identifier Wizard
- Optimizing Label Printing Performance
- Status Monitor Overview
- Silent Install

For downloadable versions, visit:

- www.seagullscientific.com/asp/whitepapers.aspx

